



Coordination : INRAE
EU Grant: 2.7 M€ (2024-28)

Pharm-ERA: a new European doctoral network that will hire and train 10 PhD students to improve monitoring and environmental risk assessment of pharmaceuticals, antimicrobial resistance and pathogens from terrestrial to aquatic environments

8 countries



7 academic partners



7 non-academic partners

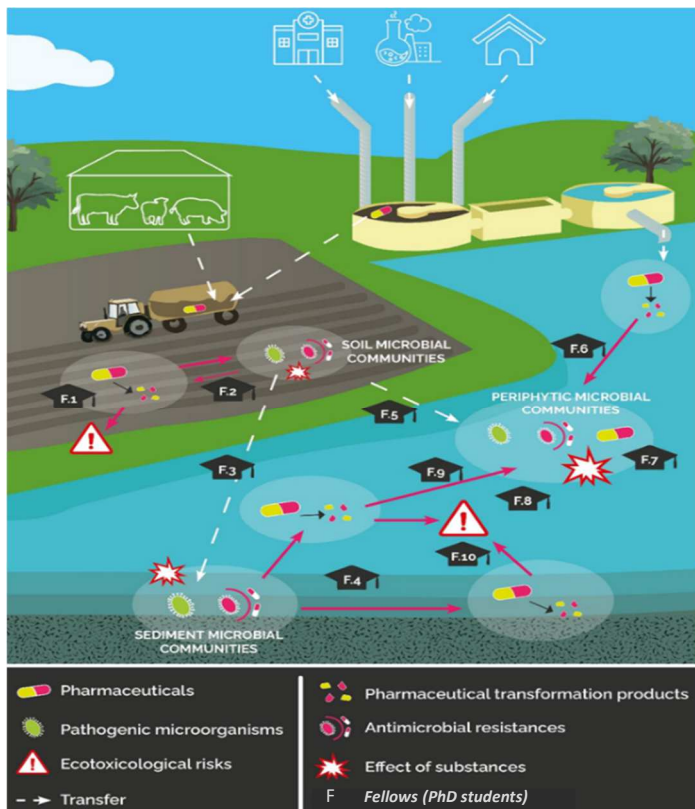


3 main research objectives

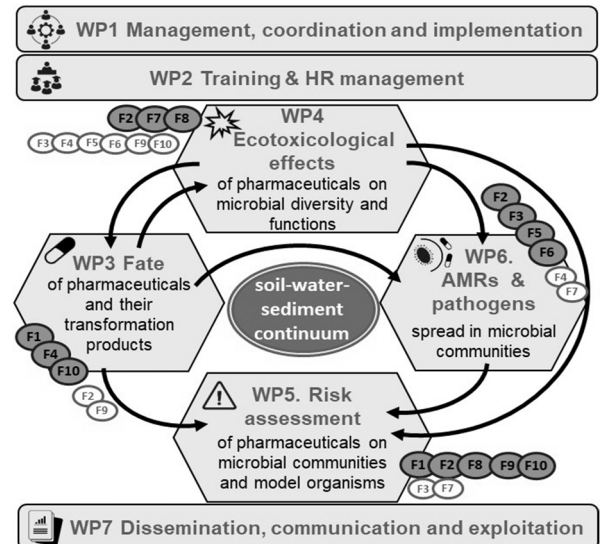
- Assess and predict the fate of pharmaceuticals (PhACs) and their transformation products (TPs) along the soil-water-sediment continuum
- Investigate the ecotoxicological effects and environmental risks of PhACs and their TPs on soil and aquatic ecosystems with a focus on microbial communities
- Determine the main drivers of antimicrobial resistance and pathogens spread along the soil-water-sediment continuum with a focus on the role of microbial diversity and environmental continuum

10 PhD Students to be hired and trained

International, interdisciplinary and intersectoral doctoral projects covering scientific disciplines including environmental and analytical chemistry, microbial ecology and ecotoxicology, molecular biology (incl. multi-omics approaches) and chemical fate and effect modelling.



7 complementary Work Packages



A rich and diversified training program and network for each PhD Student

- Interdisciplinary scientific skills and knowledge
- Experience in academic & non-academic environments
- Mobility plan across Europe
- A sustainable, interdisciplinary, international and intersectoral network
- Wide range of transversal and soft skills
- Wide diffusion of scientific challenges and results

➔ **Pharm-ERA = a professional boost for future PhD Scientists**

Agenda

Start Date: 1 february 2024

Publication of the 10 PhD opportunities: Spring 2024

Start of the PhD projects: September to November 2024

Stay connected to submit your application !

Applicants must not have resided or carried out their main activity in the country of the host organization for more than 12 months in the 36 months immediately before the call deadline

Information and contacts



INRAE

Stéphane Pesce

INRAE UR RiverLy

Coordinator

stephane.pesce@inrae.fr



Chloé Bonnineau

INRAE UR EABX

Scientific Manager

chloe.bonnineau@inrae.fr

